

EisBaer EisTouch HI 6G – 10" Touchpanel with PoE



Specification:

- Fanless Design, compact and maintenance free
- Intel® Celeron N6211 (up to 3.0GHz)
- Intel® HD Graphics
- 4GB RAM
- 128 GB (M.2 SSD)
- OS: Windows 11 IoT Enterprise
- 10,1" Display 1280 x 800 Pixel
- Power supply: **PoE IEEE 802.3at** from 25Watt
PoE support condition: Use without other power consuming devices
- 2x USB 3.2
- 2x 2.5GigaLAN RJ45 (1x Ethernet, 1x PoE-Ethernet)
- 1x RS 232/422/485 (Default: RS485)
- 1x internal speaker 1W
- 1x Power supply via 12 VDC external
- Operational temperature: 0°C ~ 50°C
- Humidity: 0 ~ 90%, not condensing
- Front: IP65
- Size-Display (W x H x D): 264,5 x 173,29 x 35,7*mm - includes display frame: 13mm
- Optional: EisTouch 6G - FM-wallbox (254 x 163 x 54 mm)
- Optional: EisTouch 6G - Mounting kit for hollow wall mounting
- Optional: EisTouch 6G – KNX-Interface
- Optional: EisTouch 6G - Cavity wall mounting kit
- Optional: EisBaer HI-Server 4.0 NT (Power supply)
- Optional: EisBaer Hardware license with 10 pages / 200 components/channel
- Optional: EisBaer Hardware license with 20 pages / 400 components/channel



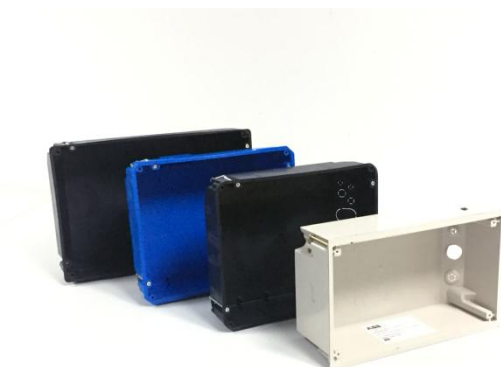
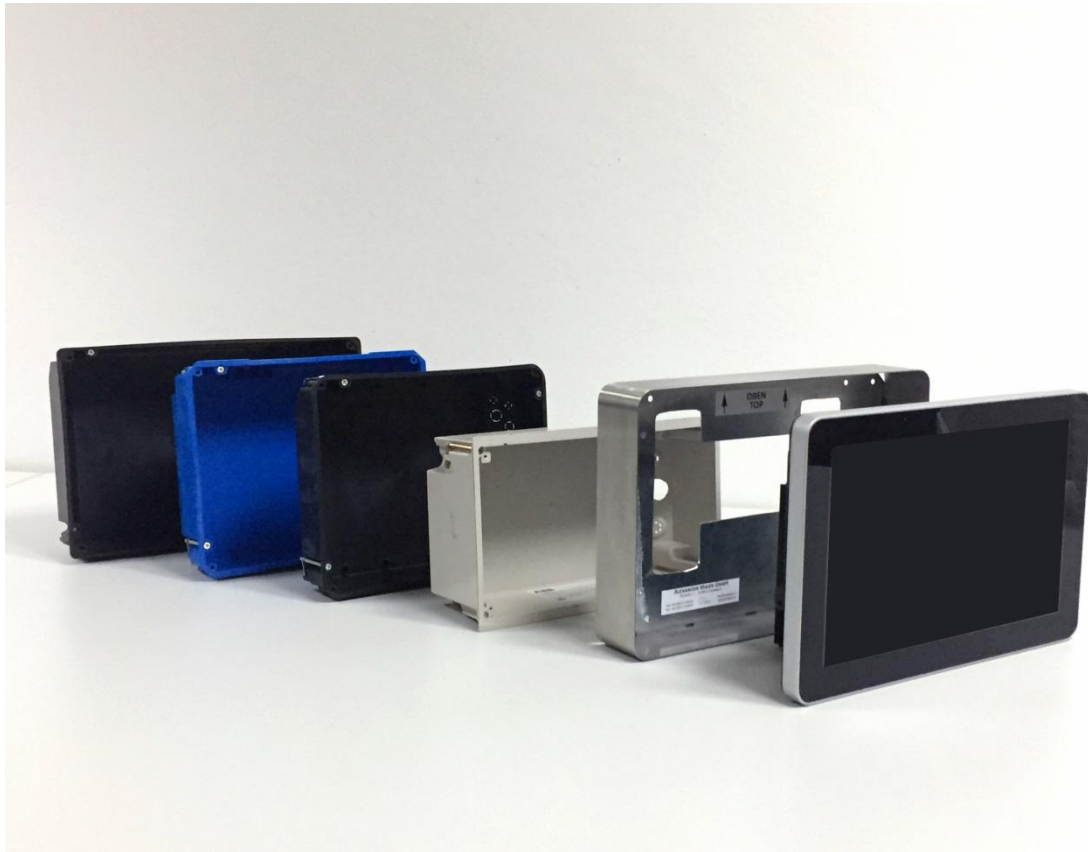
Flush-mounted housing

Please note: The touch panel 6G does not have a microphone and therefore it can not be used as a door intercom indoor station.

Special surface-mounted frame made of stainless steel for replacing existing panels from third-party manufacturers. The flush-mounted housing of the previous touch panel can remain in place.

You can currently replace the following variants with our EisTouch 6G surface-mounted frame

- MT701
- Control Panel
- Comfort Panel
- Smart Panel



Existing flush-mounted housings



EisTouch 6G in surface mounting frame

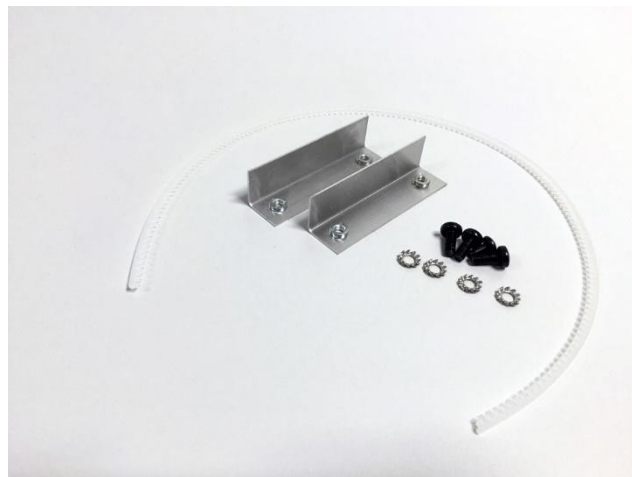
Cut-out dimensions (flush-mounted housing - 10" EisTouch 6G):

Width: 254 mm (B) Height: 163 mm (A) Depth: 54 mm (C)
Surrounding support edge: 3mm per side



Optional accessories for flush-mounted housing - 10 "EisTouch 6G:

- Cavity wall mounting kit



Installation Instructions – Wall Mounting of Flush-Mounted Housing:

When installing the housing flush into masonry, ensure that it is installed so that it is at least flush with the top of the wall. If the housing is installed deeper, the distance to the magnetic mounts on the touch panel can be adjusted as needed using the internal knurled screws inside the housing. Heat dissipation from the housing into the masonry must be ensured. Secure the touch panel's safety steel cable to one of the knurled screws by unscrewing it, threading the cable through, and then screwing it back in. This prevents damage to the panel caused by a fall.

When installing in a stud wall (drywall, wood, etc.), ensure that the rebated edges of the housing are flush with the wall and that the housing can be inserted with slight clearance. Attach the optional cavity wall mounting kit to the housing before installation, and after inserting the flush-mounted housing, slide the brackets forward from the sides and screw them tight. Attach the touch panel's safety steel cable to one of the knurled screws by unscrewing one of them, threading the cable through, and then screwing it back in. This prevents damage to the panel caused by falling.

When installing the panel, make sure that heat cannot become trapped or accumulate at the front. Ensure there is sufficient clearance at the back or provide an exhaust vent above the installed panel. Make sure the panel cannot be accidentally covered by objects (such as towels or folders) to prevent heat buildup.

Installation Instructions – Surface-Mounted Housing:

When mounting the panel on the wall using the **stainless steel flush-mounted frame**, please ensure that the magnets on the back of the panel are fully screwed in. The panel should be flush with the top edge of the frame. Secure the panel's safety cable to the surface-mounted frame using a screw and washer to prevent the panel from falling. The flush-mounted frame should not be covered by objects, curtains, etc., so that any heat generated can dissipate adequately. Always use the supplied suction lifter to remove the panel. Do not use a suction lifter designed for floor tiles—this will damage the front glass of the touch panel.

The panel in the stainless steel frame is not intended for horizontal installation (e.g., on a table). Additionally, there is a risk that it could be covered or obstructed by objects, which could lead to heat buildup—a situation that must be avoided at all costs. The same recommendations apply to installation on slanted desks. General heat radiation from the front of the display must be avoided. Therefore, use the available flush-mount housing and ensure there is sufficient space to guarantee adequate heat dissipation (see installation instructions – flush-mount housing).