

PRODUCT CATALOGUE 2018



EISBAER SCADA

Inform yourself about our visualisation software EisBaer SCADA and get to know the advantages and endless possibilities of the software



HI-SERVER

Mini-PCs and controllers with minimal energy consumption, maintenance-free and absolutely fanless - perfectly matched devices for your visualisation projects



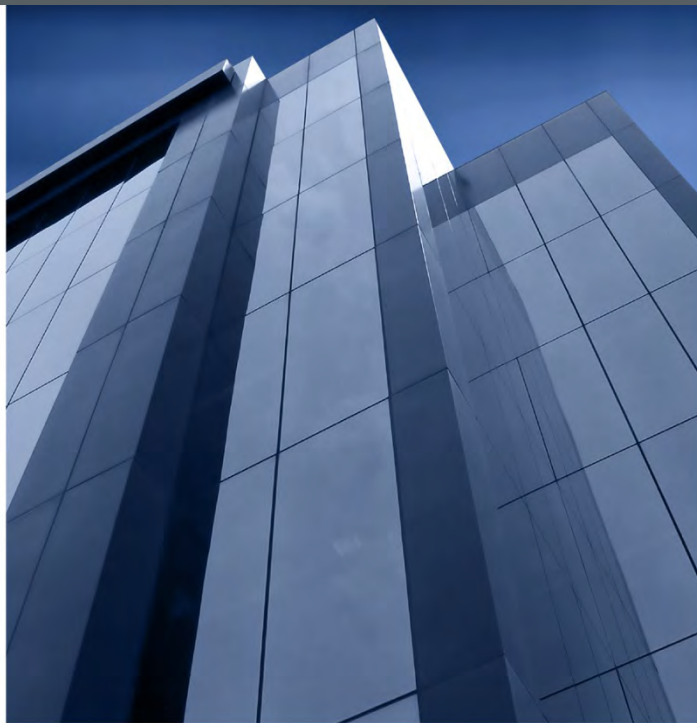
EIS TOUCH

Stylish and attractive touch panels for your EisBaer SCADA visualisation in standard and widescreen format



EisBaer SCADA

Visualisation software





Established in 1996 in Eberbach near Heidelberg, Alexander Maier GmbH has developed into an innovative, high-performance company.

The company's business focus lies in the visualisation area based on different bus systems and communication interfaces of the building system.

In the long company history Alexander Maier GmbH can look back on copious innovative projects and developments. Numerous of the world's largest projects in building automation technology were realized with our support.

With these system solutions our customers can also rely on a competent partner in terms of software, hardware and support.

In order to achieve maximum customer satisfaction, we have established an internal tracking and monitoring system, which ensures premium quality, on-time delivery and optimum efficiency.

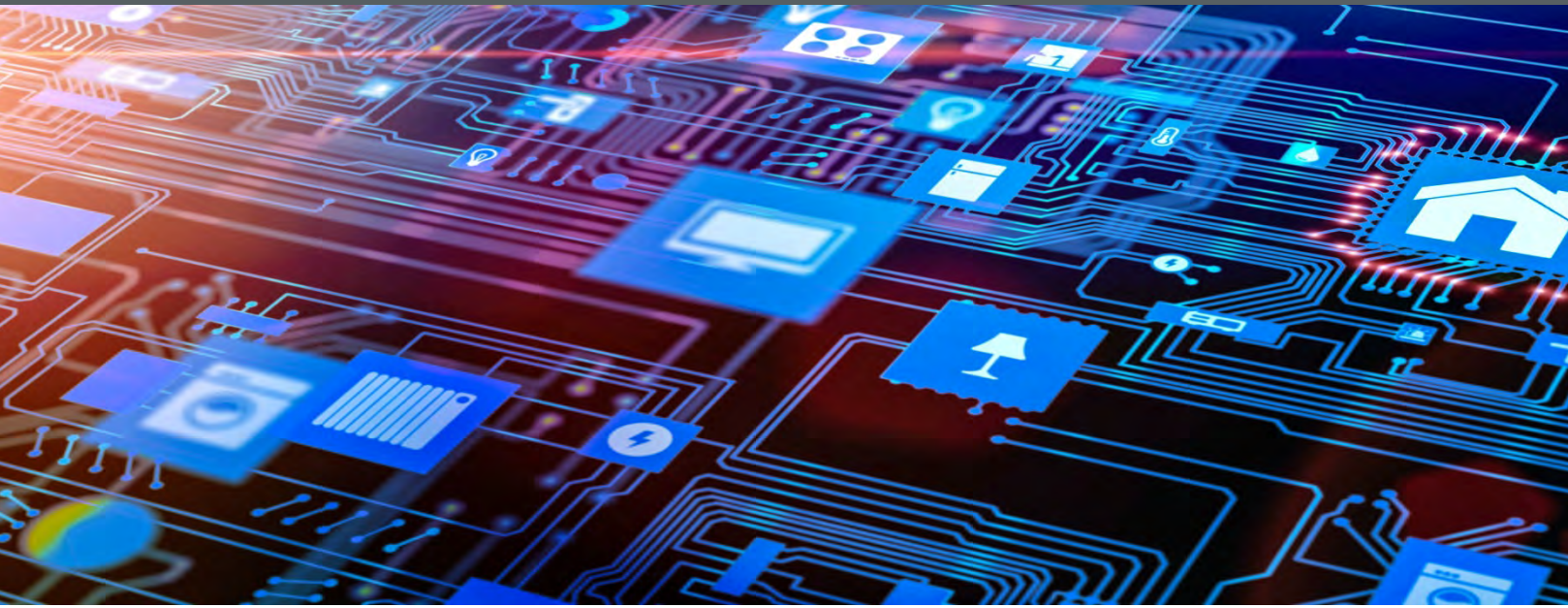
As an expert and certified tutor in the KNX field we have maximum competence.

Alexander Maier, Dipl.-Ing. (FH)
Managing Director



Products

Creative ideas leading the way to the future



EisBaer SCADA

EisBaer SCADA is an innovative and cost-efficient software for the visualisation and automation of building and machine intelligence. **SCADA** (Supervisory Control and Data Acquisition) is defined as the central monitoring and control of technical processes by means of a computer system.

EisBaer SCADA offers a large range of potential applications, from the control of single rooms or machines, apartments or houses through to largescale buildings or whole building complexes.

An intuitive graphical editor with flexible menus, convenient layout tools and customizable function templates facilitates the creation of user interfaces for your applications. The software provides interfaces for a wide variety of control and IT systems and is therefore a universal platform for building management.



EisBaer SCADA – Suite



Editor



Client



Server Console



Client-Updater

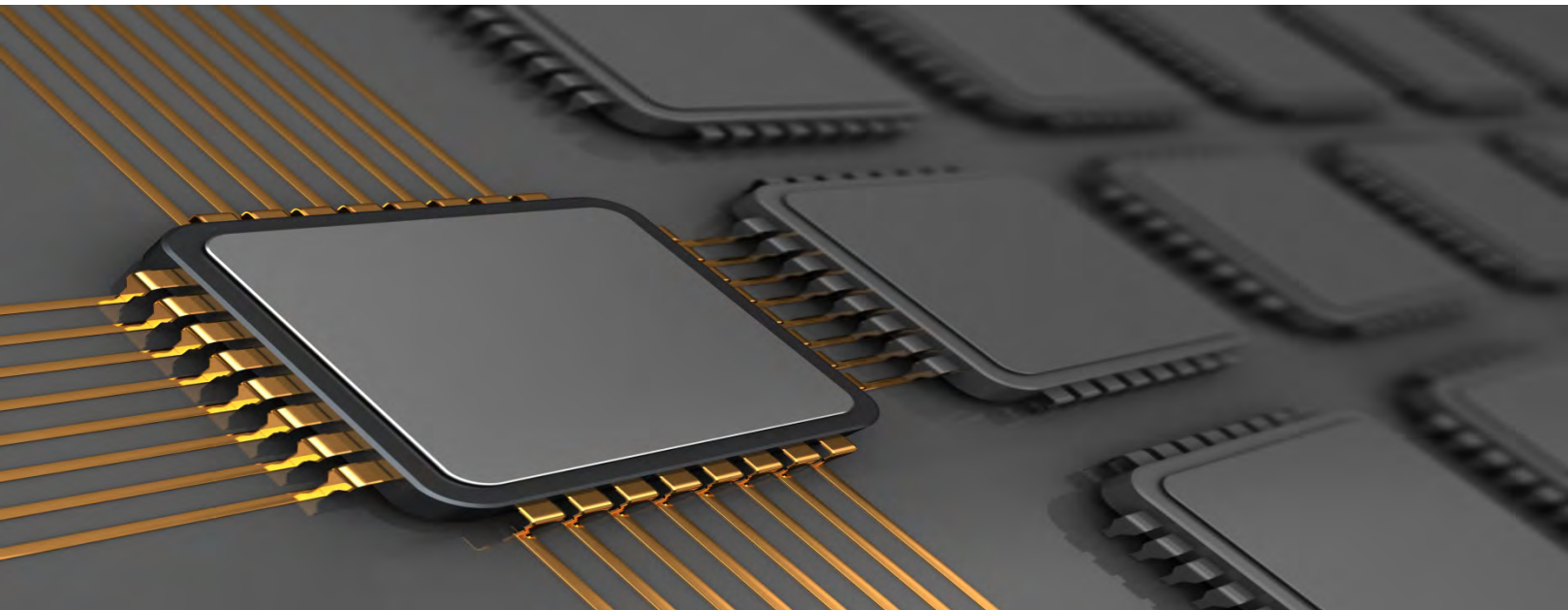


App

Technology

The software is based on the Microsoft® .NET Framework, the core of all innovative Microsoft® Server and desktop operating systems. The core architecture of the software was developed in C# and XML. The use of global standard programming languages and the component-oriented design allows for the development of custom components and the integration of third-party function modules.

EisBaer SCADA uses an internal network structure and is independent of the protocols used, which makes it a flexible and universal system. The software operates in a true server-client structure, in which the server part perfectly fits in commercial server IT structures.



The wide range of drivers and the programmable and arbitrarily scalable user interface offer high predictability. During the project all requests can be flexibly responded. The software always includes all the features. Additional packages are not required. The license size can flexibly grow with the solutions. The integration of the software is ensured in the existing IT infrastructure.

The number of client operator stations or Smart Clients (Apps) is not limited and not relevant licensing. Many service providers are in the market with qualified personnel to set up and run the systems.

Interfaces

Available interfaces in EisBaer SCADA



Interfaces

Available interfaces in EisBaer SCADA



Benefit

Fast and reliable – EisBaer SCADA at work

Planning

Requirements and wishes of the customer on its building system technology know virtually no limits. All functions of a modern building can be operated together with other building systems under a common user interface.



Constructing

The modern editor is free of charge. To use it a Windows PC is necessary.

With the editor it is possible to realise any large and complex projects. It always includes all the features.

Additional functions must not be purchased separately. All features can be tested in the online simulation mode during the creation of the graphical user interface by drag-and-drop. By drawing layers when creating the graphical user interface effectively work is possible.

Different data points from different systems are integrated via interfaces in the graphical user interface. The use and networking within the graphical user interface is identical.

The implementation of cross-system and highly customisable graphical user interfaces is possible in a very short time.

Operating

The user interface for the operation of cross-system display and operation of all systems of the building can be realised according to the individual requirements. For the operation, this results in unique and exactly matching functionality.

Different users can be equipped in the system with roles with differentiated rights. Thus, a user can see, use or modify specifically certain functions. The number of PC and App-operator stations is not limited.



The software includes the ability to record performance and energy consumption data. Based on these data particularly energy-efficient systems can also be implemented with the existing control functions.

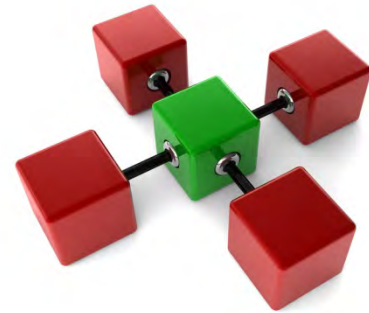
The software system is within the major version online updateable free of charge. So you always benefit from the latest advanced features.

Applications

It only works with the right tools

Error Message Processing according to DIN

- Alarm Manager with acquisition of messages in accordance with DIN 19235 new-reporting-procedures



- Collective alarms by priority, collective visual indicator and collective acoustic indicator
- Any number of reports
- Linking of external documents or URLs
- Log files and unchangeable storage of messages in SQL-based database



Security with video surveillance

- Representation of IP cameras with MJPEG display
 - Adjustable frame rate per camera display
-
- Freely positionable, also in site plans
 - IP camera archive for recording video snapshots with any external trigger
 - Delivery of recordings via email and / or FTP
 - Optional video recording with an additional software package



Energy Monitoring

- Consumption Monitor with budget management and trending per channel
- Creation of virtual measuring groups

- Inputs for measured values, counter values and S0 signals
- Plotter with data recording of measured values in SQL-based databases

Energy Efficiency

- Peak load management by maximum monitor with any switching stages
- Specifications of the maximum monitor externally programmable by email



- Calendar as a universal switch with Outlook-like operation, Pre- and post-control for technical systems
- Astro time switch to control by sunrise and sunset, with offset channels and output of the sun position and sunshine hours

Licensing Model

Basically, the complete software package is available in the latest version on the homepage for free download. No license is required to use the editor. The license is only required to operate the server. Without a license, the server-client operation can be tested for 30 minutes.

The number of clients connected does not effect the licensing. The required license is based on the size of the project. Depending on the number of pages and used components / channels, the project license is calculated.

Please note, that some components have a weighting of more than 1. The maximum monitor component for instance has a factor of 500. The component label in the editor shows this factor in brackets.



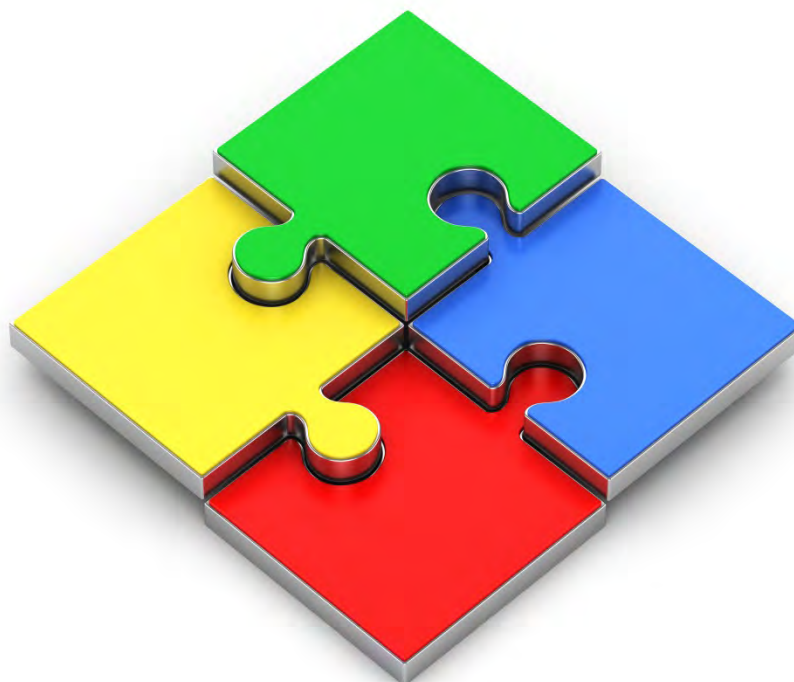
The number of channels is the number of communication objects in the "Dynamic folder" . The number of data points in driver components is not taken into account. It is crucial for the size of the license that pages and components / channels in the realised project are smaller or equal to the license size. If a larger license is required, an upgrade is possible.

The USB license dongle does not need to be replaced. You will then receive only a new activation file for the existing dongle by e-mail or download.

Project Licenses:

- EisBaer SCADA 2 Project License Pro Domo
(5 pages/200 components/channels), incl. USB License Dongle
- EisBaer SCADA 2 Project License Starter
(10 pages/500 components/channels), incl. USB License Dongle
- EisBaer SCADA 2 Project License Professional
(30 pages/3.000 components/channels), incl. USB License Dongle
- EisBaer SCADA 2 Project License Architect
(100 pages/10.000 components/channels), incl. USB License Dongle
- EisBaer SCADA 2 Project License Enterprise
(unlimited pages/100.000 components/channels), incl. USB License Dongle

Updates within the acquired main license are free of charge. The life time of the software is not limited. No annual fees.



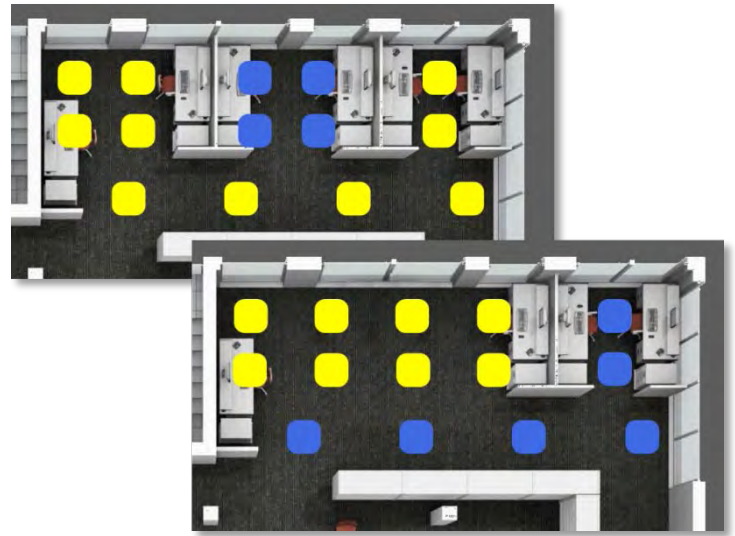
Flexibility

Respond quickly and flexibly to changes

Update

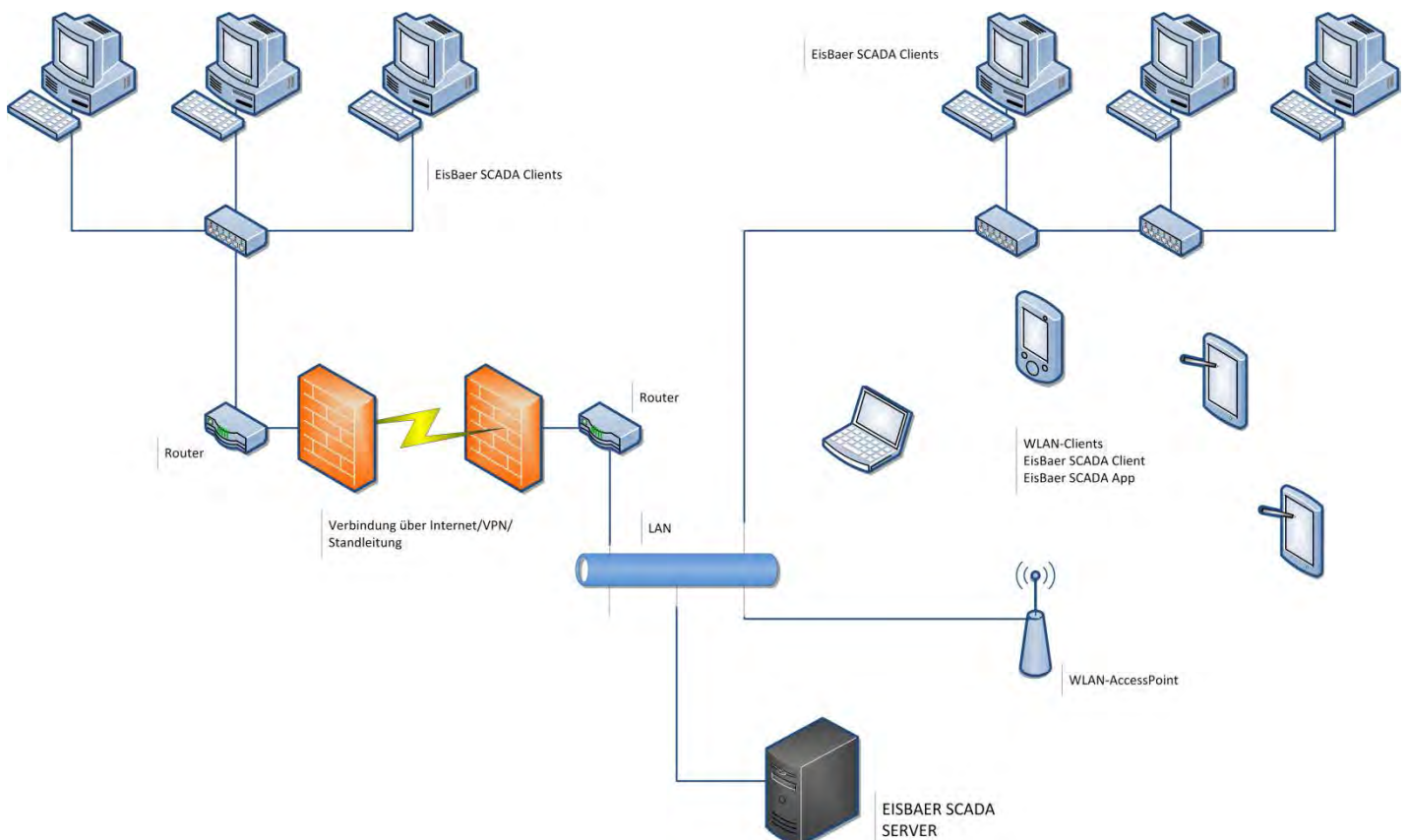
The visualisation does not have to be reprogrammed in case of changes to the room layout.

By re-importing the data, the gui and control elements are automatically updated and adapted to the new situation. Finally, only the changed graphic needs to be updated .



Connectivity

EisBaer SCADA as a gateway between building system technology, the PC / multimedia world and as a human interface.



Flexibility

Can be used on PCs, touch monitors, as well as on tablets and smartphones. In the mobile world EisBaer SCADA even supports two different display modes (the horizontal landscape- and the vertical NestedList mode), which can be used depending on the handling of the devices.

The App is available free of charge for iOS, Android, Windows Phone, Windwos RT and Windows 10 - please note that the development of the EisBaer SCADA – Windows-Phone app has been stopped since version 2.1.15.



Quality & Support

Quality and Support – that's something you can rely on



Quality & Support

Thanks to powerful and state-of-the-art hardware and software equipment, we are able to perform all required tasks, including 3D animations, without the need to resort to third-party suppliers.

Our competent team of support specialists will be happy to answer your questions in English or German. We offer you full online support on our web site www.busbaer.de.

Documentation and a board around the clock are available. Do not hesitate to contact us with suggestions or questions on specific issues.

Assistance with all questions towards your total solution.

E-Mail: Info@busbaer.de

Phone +49 (0) 6271 919470

Homepage: <https://www.busbaer.de>

References



Potential applications of our products range from small-sized office and residential buildings up to large-scale building and facility complexes.

Our solutions are based on the manifold requirements of our customers from various sectors.

Josef Ennenbach of Flughafen Köln-Bonn GmbH (Airport Köln/Bonn):

"Alexander Maier GmbH has been our service provider for many years. The premium quality and reliability of their products have contributed to maintaining the high standard of our operation. With every new project, Alexander Maier GmbH stands out with fast reaction times and model solutions allowing us to continuously increase the performance of our facilities."



Quick guide

Decision and configuration support for EisBaer SCADA

Software features quick guide

Feature	Summary	Description
Multi-user visualisation incl. VPN access	complete software solution based on state-of-the-art Microsoft Windows® technology	for control, documentation and automation tasks under Microsoft Windows based on the .NET Framework 4.6. The visualisation can be configured as a redundant system. A VPN can be used as remote access.
Multi-user visualisation incl. VPN access	complete software solution based on state-of-the-art Microsoft Windows® technology	for control, documentation and automation tasks under Microsoft Windows based on the .NET Framework 4.6. The visualisation can be configured as a redundant system. A VPN can be used as remote access.
Smart-Clients	iOS, Android, Windows Phone and Windows RT	In the respective stores the apps are available free of charge for the current operating system variants. Two viewing modes are supported: Landscape (Landscape, Graphical View) and List View (Portrait, Menus). Rotation of the device switches between both modes.
Client	Number not limited and free	
Interfaces	integrated and royalty-free	Supported and available interface: KNX USB, KNX Net / IP tunneling, KNX Net / IP routing, KNX EIBLib, DMX direct network connection (control RGB), digitalStrom, ModBus TCP, Modbus RTU, Modbus UDP, CAN Bus, OPC Client UA, OPC Client DA, OPC Client DA XML, LON (via OPC), BACnet Server, BACnet Client, Fidelio (Hotel Booking System), ESPA 4.4.4 Slave, Sonos, BOSE Soundtouch, Revox Voxnet, Lutron, Tesla, Multi-IO-IP (tcp / udp / http), IRTrans, eKey, Philips Hue, Koubachi Plant Sensor, Enocean, ZigBee LightLink, Z-Wave, ABB CMS-600, ABB M2M, ABB Sigma i-bus, DALI Emergency Light, SNMP Trap, SNMP Manager, SNMP Agent, SNMP MIB, Diginet Rapix, C-Bus, Wago PFC (via Modbus), Profibus DP (eg to S7), Denon Heos, Siemens LOGO 8!, Gardena Smart System, EVIS, Voxior, Global Caché
Interface modules	any	Integration of any number of driver modules, e.g. for coupling several KNX systems in one project or coupling of KNX with BACnet
KNX-logging	Recording of the telegram traffic	Without ETS, the telegrams can be logged from the KNX driver. The protocol files can be read directly with the ETS 4/5.
Editor	free, any size and complexity	free editor for creating any large and complex projects, including online simulation mode
Software-Updates	free of charge within the main version	
Updates	automatically from the server to the clients	Updates are automatically sent and installed by the server to the clients

Feature	Summary	Description
Windows service	on a server without user login	By separating display and processing, it is possible to operate the EisBaer server as a system service on a server without a user login. After the EisBaer SCADA server service is started, the system is automatically ready without additional operator interventions and the states of those bus nodes whose addresses are parameterised for this initialisation are requested.
Dongle	Licensing using USB dongle	any PC's usable, no hardware association, licensing with USB dongle, remains on server in the customer system
Graphical user interface	Visualisation of building and device conditions	Graphical user interface: Visualisation of building or device states with freely positionable and rotatable elements. Save your own images and menu structures per user group
Layer	Layer for optimised design of graphical user interfaces	
Graphic formats	suitable floor plans, photographs, symbols and icons	Possible graphics formats: BMP, PNG, JPG, GIF and TIFF. PDF, DWG, and DXF files should be converted to PNG before and then they can also be used.
Languages	any languages	The interface and menus are multilingual. Any language (culture settings) can be used in the interface. The language is switched directly on each client at runtime.
Password protection	for any number of persons	If the project is password-protected, any number of people with independent passwords can log in as an operator in the client program. The names and passwords are arbitrarily long and non-readable.
Fault manager	according DIN 19235	Alarm logger with recording of messages according to DIN19235, any number of messages, including linking of external documents or URLs, with logbook function and nonchangeable storage of the entries in a SQL based database
Presence-simulation	as ring storage	as ring memory with recording and day-synchronous playback
Astro timer	after sunrise and sunset	Astro time for control following sunrise and sunset, with offset channels and output of the sun position, moon phase and sun hours
Operation hours mediator	for consumers with 50/50 or 3/3 usage to compensate aging	

Quick guide

Decision and configuration support for EisBaer SCADA

Feature	Summary	Description
Cloud-based solution	self-managed	self-managed cloud solution based on FTP data transfer, backup of any data and data volumes
DALI Emergency lighting	for DALI self contained emergency fittings	DALI emergency lighting manager as a test system for DALI emergency fittings, Testing (function, battery, discharge and duration) and reporting and visual presentation
File logger	for recording any values in csv files	
IP-cameras	MJPEG, h.264 und rtsp	Display of IP cameras with MJPEG or h.264: IP camera and media display, freely positionable also in floor plans, saving of snapshots and optional sending via e-mail and / or FTP
IP-camera archive	video snapshots	IP Camera archive for recording video snapshots with any external trigger
IP-camera motion detection	video motion detection	IP camera based motion detector with alarm video recording function
IP-Link	bidirectional with foreign products	
JSON / XML Parser	for retrieving data from external sources	
Calendar	as a universal time switch	Calendar as a universal time switch with Outlook-like operation, activation / deactivation via communication object, date series with adjustable repeat patterns, import export from iCal / ics, import from Outlook calendar, simple view and operation as a weekly timer
Media player	for the integration of multimedia content	
Virtuell meter	Inputs for measured values, counter readings and S0 signals	
Plotter	with data recording of measured values	Plotter with data recording of measured values in SQL based data bases, without limitation
Multi converter	to run your own C # and VB.net program code	Special calculations or requirements can be executed or solved using the programming languages C # and VB.net.
QR Code Encoder	Representation of encoded information	Konfigurationsübernahme über QR-Code
Sequencer	freely programmable for controlling any load	Zeitgesteuerte Abläufe wie z.B. Lauflichter, Gartenbewässerungen, Ein- und Ausschaltung von Lasten

Feature	Summary	Description
SIP-Audio/Video-Door intercom	customisable graphic	
Soft-PLC	can be used as often as required	Soft PLC can be used as often as required in the project, without limitation of inputs, outputs and gates, including mathematical functions and controllers. Integrated simulation mode
Peak loadmanagement	maximum monitor for any number of switching stages	The maximum monitor ensures an optimal distribution of the available power by intelligent monitoring of the energy usage and avoids expensive peaks. Input for S0-impulse, power and meter values
Start applications	of any PC programs	
Scenes	Save, Recall, Monitor	Saving and recalling light scenes, monitoring of correct setting of the outputs and information about local changes
Consumption monitor	with budget management and trend calculation	Consumption monitor with budget management and trend calculation per measuring channel, set up of virtual groups, inputs for measured values, counter readings and S0 signals
Wecker	with dynamic offset control of output channels	
Weather forecast	free data delivery for any location	Weather forecast with free data delivery for any location, as measured values for integration into the automation functions of the plant, e.g. Forecast based energy-efficient heating or cooling of buildings
Human centric lighting	Color temperature control / constant light control	Simulation of the daylight with color temperature control and constant light control (circadian rhythm)



HI-SERVER - SERIES

HIGH-PERFORMANCE AND ENERGY-EFFICIENT

ENERGY SAVING AND INDIVIDUAL MINI-PCS FOR YOUR EISBAER SCADA
VISUALISATION IN PRIVATE AND COMMERCIAL CONSTRUCTION





HI-Server - Series

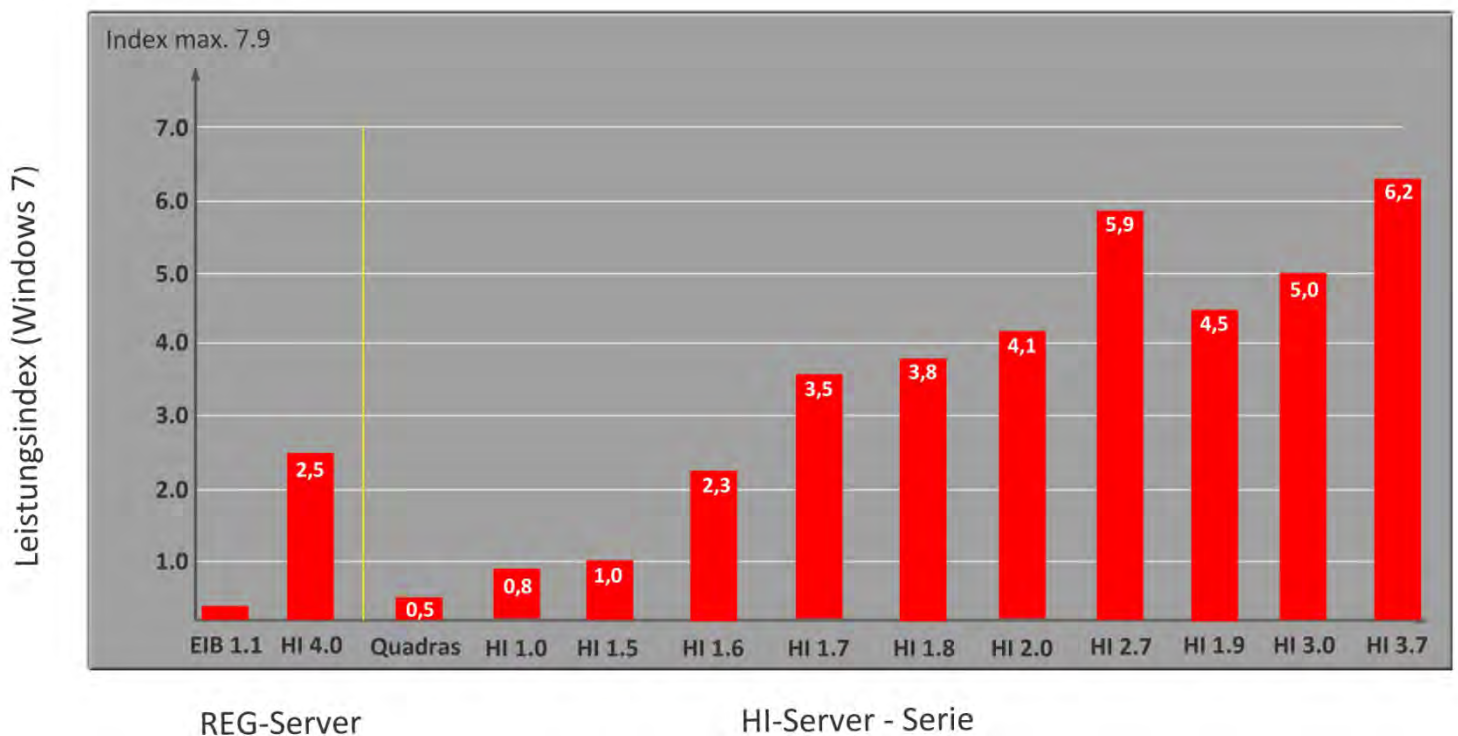
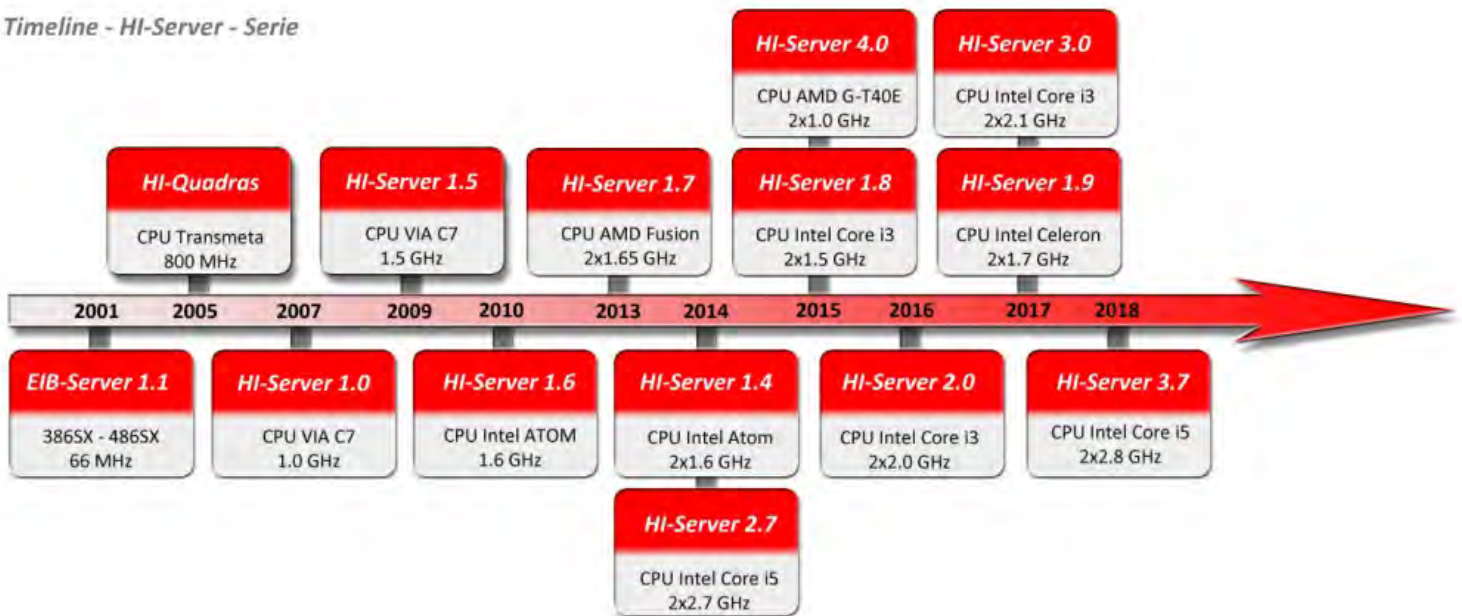
For each project the appropriate visualisation server

Opt for the mini PC that you need for your project.
Minimum energy consumption for daily 24-hour operation,
hardware- und software-optimized.

Quality and service, this is what EisBaer SCADA and our hardware stand for. With our HI-Server we cover every technical requirement in the project from high-performance to energy efficiency. The HI-Server are suitable for 24-hour operation, with no moving parts, with very latest operating system on the latest hardware base. All systems are fully assembled and subjected to a 24-hour burn-in-test before delivery, and, therefore, reach the customer completely installed and adjusted. A selection of highly efficient and integrated server can be found on the following pages - the right package for each application.

HI-Server - Series

Timeline - HI-Server - Serie



HI-Server - Series

HI-Server 1.9

Fanless mini-PC with great price/performance ratio

The ultimate server for your home. Full EisBaer SCADA functionality at an affordable price with integrated system Wi-Fi hotspot. Bring your house on the cutting edge of technology. The HI Server 1.9 is the ideal computer for buildings in which you access via EisBaer SCADA Mobile Clients (free App for iOS and Android devices, Windows Phone and Windows 10 / RT). It is also an ideal tool as a pure platform for the EisBaer SCADA server.

The fanless HI-server 1.90 conceals the latest PC technology in its interior. The heart of this small computer giant forms an Intel® Celeron 3215U processor with a dual-core Core 1.7 GHz.

The silent PC offers a wide range of connectivity options with two Gigabit LAN ports, two HDMI, audio out, mic-in, four USB and a COM interface.

The HI server 1.9 has a 2 GB RAM (DDR3 SO-DIMM) and an internal SSD hard disk with 32 GB. As a video output you have two separate HDMI ports available.

The HI-server with his thick black metal housing is ideally suitable for harsh industrial environments. Smooth operation is guaranteed both at low ambient temperatures down to 0 degrees to a very high temperature of 50 degrees. With its compact size of only 134mm x 111 mm x 52 mm (D/W/H) it can be easily installed in the smallest space. A noisy fan may be omitted due to its low energy consumption of no more than 13 W. Combined with the low heat generation the HI-server meets all requirements made on an industrial PC.

Due to its compact size, it is also ideal for digital signage applications, because it is just 5cm so narrow that it can be hidden behind each monitor or installed as a stand-alone system.



The HI-Server plays easily 1080p content and can be mounted with the help of an available VESA mount very quickly and conveniently behind a monitor, on a wall or on a DIN rail - its maximum resolution is 3840 x 2160px.

All systems are fully assembled with Windows 7 Professional or Windows 10 and subjected to a 24-hour burn-in-test before delivery, and, therefore, reach the customer completely installed and adjusted.

HI-Server 1.9

Technical Data

SPECIFICATION

CPU	Intel® Celeron 3215U 2x1.7Ght, passiv gekühlt
RAM	2GB DDR3
HDD	32GB SSD SATA
GRAPHIC	Intel® HD Graphic

PORTS

2x Gigabit LAN
1x USB 2.0
3x USB 3.0
1x Serial (COM)
1x MIC-In
1x Line-Out
2x HDMI

OTHER DATA

13 Watt input
Voltage input 9 - 19V, 12V power supply included
fanless operation
134 mm x 111 mm x 52 mm (D/W/H); IP60
Operating system Microsoft® Windows 7 Professional or
Microsoft® Windows 10
Visualisation: EisBaer SCADA -Suite (without project licence, without Dongle)

Article No.: AM-EIS-400-34

OPTIONAL

EisBaer HI-Server 1.9 ProDomo (incl. EisBaer ProDomo Hardware license)
EisBaer HI-Server 1.9 – Assembly kit (VESA mount)
EisBaer HI-Server 1.9 - DIN rail mounting kit
EisBaer HI-Server – 19" Mounting rack, 1HE
EisBaer HI-Server – Wireless Service Keyboard with Touchpad
VGA, via HDMI-VGA converter (active)
DVI, via HDMI-DVI-D converter (passive)
RS485 Schnittstelle für z.B. Modbus RTU

HI-Server - Series

HI-Server 3.0

Mini-end PC – Our bestseller and all-rounder

The HI Server 3.0 is an excellent visualisation PC as server and/or client in continuous operation in automation technology, for internet stations and much more. With the particularly energy-efficient EisBaer HI-Server 3.0 high electricity bills compared with standard PCs belong to the past. The question about the location of the visualisation computer is simplified by the compact dimensions.



The connection between the EisBaer HI-server and the KNX bus can easily be realized with an external interface. The connection is possible through a network connection to the corresponding KNX (IP-Interface/IP-Router), or via a EIB/KNX-USB interface.

Due to the numerous interfaces such as LAN, serial and 4 USB ports, many systems can easily (Modbus, digitalSTROM, OPC, etc.) intrude from the BUS- and network technology and with the pre-installed EisBaer SCADA Suite using Windows 7/10.

By fanless operation and the use of a solid state disk (SSD) maintenance of the mini-PCs has become superfluous.

The HI-Server 3.0 is meanwhile our recommendation as standard device for different range of applications in the private and commercial environment, also as modular computer unit on our touch panel series – EisTouch HI.

In conjunction with the optional VESA mounting kit or DIN rail mounting kit, the server can also be easily mounted and operated on other devices, holders and special assemblies. If you would like to place the server in a 19" server rack, you can order the matching 19" rack as an option.

All systems are fully assembled with Windows 7 Professional or Windows 10 and subjected to a 24-hour burn-in-test before delivery, and, therefore, reach the customer completely installed and adjusted.



HI-Server 3.0

Technical Data

SPECIFICATION

CPU	Intel® Celeron 3215U 2x1.7Ght, passiv gekühlt
RAM	4GB DDR3
HDD	64GB SSD SATA
GRAPHIC	Intel® HD Graphic

PORTS

2x Gigabit LAN
1x USB 2.0
3x USB 3.0
1x Serial (COM)
1x MIC-In
1x Line-Out
2x HDMI

OTHER DATA

11 Watt input
Voltage input 9 - 19V, 12V power supply included
fanless operation
134 mm x 111 mm x 52 mm (D/W/H); IP60
Operating system Microsoft® Windows 7 Professional or
Microsoft® Windows 10
Visualisation: EisBaer SCADA -Suite (without project licence, without Dongle)

Article No.: AM-EIS-400-37

OPTIONAL

EisBaer HI-Server 3.0 – Assembly kit (VESA mount)
EisBaer HI-Server 3.0 - DIN rail mounting kit
EisBaer HI-Server – 19“ Mounting rack, 1HE
EisBaer HI-Server – Wireless Service Keyboard with Touchpad
VGA, via HDMI-VGA converter (active)
DVI, via HDMI-DVI-D converter (passive)
RS485 interface for e.g. Modbus RTU

HI-Server - Series

HI-Server 3.7

HIGH-END Mini-PC – for maximum performance

The application areas of HI 3.7 are: Visualization PC as **server and / or client** in continuous operation, mainly in automation technology / building system technology and suitable for license sizes from ProDomo to Enterprise.

Our visualization software EisBär SCADA is preinstalled ready to use (without project license).

The HI Server 3.7 is also a mini-computer with low power consumption, fanless and equipped with an Intel® Core i5 CPU for maximum performance, enough power reserves and connectivity.

Its main application is the operation as a platform for our visualization software EisBaer SCADA - both as a server and as a high-performance client.

The central installation in a server cabinet is just as easy with the optional 19" mounting bag, as the use as a PC behind a TV, or a touch panel, with the appropriate housing volume and dimensions. The optional VESA kit (optional) is all you need for it.



The computer is ready to use with Windows 7 or Windows 10 set up and a trial operation (24h burn-in test) subjected. They come ready installed and adjusted to our customers.

Our HI Server 3.7 is the first choice if you are looking for maximum performance with the best energy efficiency. This high-end device meets the highest performance requirements.

HI-Server 3.7

Technical Data

SPECIFICATION

CPU	Intel® Core™ i5-6200U CPU, 2 Cores / 4 Threads 2,3 GHz, max. Turbo Frequenz 2.8 GHz, max. 15 Watt
RAM	8GB DDR3; max. 32GB
HDD	120 GB SSD SATA
GRAPHIC	Intel® HD Graphics 520

PORTS

2x Dual-LAN Ethernet 10/100/1000 MBit/s	Expansion slots:
3 x USB 3.0	1x M2
2 x USB 2.0	1x MSATAIII
1x USB 3.0 Type-C	1x SATAIII
4x Serial RS-232	1x FullSize MINI PCIe
2x Serial RS-485	1x SIM Wifi / 3G / 4G
1x Power-Button	
1x Audio Stereo Line-Out	
1x Mic-In	
1x HDMI (max. 4096@2304@24Hz)	
1x DisplayPort (max. 4096@2304@60Hz)	
1x VGA	
1x Voltage input: 12 - 19V / DC	

OTHER DATA

20 watts maximum power consumption, fanless operation
Operating system: Microsoft Windows 7 oder Windows 10
Visualisation: EisBaer SCADA -Suite (without project licence, without Dongle)
Width x Length x Height: 260mm x 175mm x 35mm
Material: housing: aluminum (black), end caps ABS
Operating temperature range: 0°C to +40°C
Humidity: 0% to 95% non-condensing
Included accessories; external power supply, power cord EU
Guidelines: FCC Class B, UL, CE- and RoHS compliant

Article No.: AM-EIS-400-41

OPTIONAL

EisBaer HI-Server 3.7 - Assembly kit (VESA mount)
EisBaer HI-Server – 19"- Mounting rack, 1HE
EisBaer HI-Server – Wireless Service Keyboard with Touchpad
DVI, via HDMI-DVI-D converter (passive)
WLAN IEEE 802.11 b/g/n module

HI-Server - Series

HI-Server 4.0

EisBaer SCADA Server for DIN-rail mounting

Our EisBaer SCADA server for DIN-rail mounting, optimized for a 24/7 continuous operation at a central place in the electrical distribution as DIN-rail device - space-saving, compact, energy-efficient and maintenance-free.

The Windows 7 operating system and EisBaer SCADA-Suite are preinstalled ready for use. The server has an internal KNX interface for bus access. In addition, 4 USB ports and an Ethernet interface are available.

Ideal as EisBaer SCADA visualisation server for smart home systems to be operated via mobile devices (smartphones and tablets). Usable in residential areas, industrial facilities and public buildings for the control and operation of buildings, e. g. fault management, monitor for energy consumption or as service interface.

By using the EisBaer HI Server 4.0 high operating costs due to high power consumption compared to standard PCs belong to the past. Problems when mounting the visualisation server are reduced by the very compact dimensions.



The connection between the HI Server 4.0 and the KNX bus can easily be realized by using the internal interface; an additional interface is not necessary.

Alternatively, this interface can be used as KNX gateway (IP interface / IP router) for further accesses, e.g. with the ETS.

Because of its interfaces, such as LAN and 4 USB ports, many systems from the building management and network technology (Modbus, digitalStrom, OPC, etc.) can easily be connected.

All systems are fully assembled with Windows 7 embedded and subjected to a 24-hour burn-in-test before delivery, and, therefore, reach the customer completely installed and adjusted.

HI-Server 4.0

Technical Data

SPECIFICATION

CPU	AMD G-T40E DualCore (2x 1GHz)
RAM	2GB DDR
HDD	15GB Flash disk 32GB Micro-SD Memory Card
GRAPHIC	1920 x 1200 Pixel

PORTS

- 1 x Gigabit LAN (10/100/1000Mbit/s)
- 4 x USB 1.1/2.0
- 1 x DVI
- 1 x KNX TP1 standard terminal
- 1 x Voltage input: 24V / DC

OTHER DATA

- 13,8 Watt input
- Installation width: 144mm / 8 TE (subunits)
- Operating system Microsoft® Windows 7 Embedded Standard
- Visualisation: EisBaer SCADA -Suite (without project licence, without Dongle)
- Operating temperature range: 0 ... +35°C
- Storage / transport temperature: -10 ... +70°C
- Relative Humidity: 15% bis 85% (non-condensing)
- Included Accessories: 32GB Micro-SD Memory Card
- .NET Framework 4.5.1



Article No.: AM-EIS-400-40

OPTIONAL

- EisBaer HI-Server 4.0 NT (power supply)
- EisBaer HI-Server – Wireless Service Keyboard with Touchpad



HI-Server - Accessories

HI-Server 1.9

EisBaer HI-Server 1.9 – Assembly kit (VESA mount)	Article-No.: AM-EIS-401-25
EisBaer HI-Server 1.9 - DIN rail mounting kit	Article-No.: AM-EIS-401-06
EisBaer HI-Server – 19“ Mounting rack, 1HE	Article-No.: AM-EIS-401-03
RS485 interface for e.g. Modbus RTU	Article-No.: AM-EIS-401-26
EisBaer HI-Server – Wireless Service Keyboard with Touchpad	Article-No.: AM-EIS-401-15
HDMI-DVI-D Converter (passive)	Article-No.: AM-EIS-401-13
HDMI-VGA Converter (active)	Article-No.: AM-EIS-401-05

HI-Server 3.0

EisBaer HI-Server 3.0 – Assembly kit (VESA mount)	Article-No.: AM-EIS-401-16
EisBaer HI-Server 3.0 – Top-Hat-Rail mounting bracket (VESA)	Article-No.: AM-EIS-401-03
RS485 interface for e.g. Modbus RTU	Article-No.: AM-EIS-401-28
EisBaer HI-Server 3.0 - DIN rail mounting kit	Article-No.: AM-EIS-401-06
EisBaer HI-Server – 19“ Mounting rack, 1HE	Article-No.: AM-EIS-401-03
EisBaer HI-Server - Wireless Service Keyboard with Touchpad	Article-No.: AM-EIS-401-15
HDMI-VGA Converter (active)	Article-No.: AM-EIS-401-05
HDMI-DVI-D Converter (passive)	Article-No.: AM-EIS-401-13

HI-Server 3.7

EisBaer HI-Server 2.7 – Assembly kit (VESA mount)	Article-No.: AM-EIS-401-11
EisBaer HI-Server – 19“ Mounting rack, 1HE	Article-No.: AM-EIS-401-03
EisBaer HI-Server - Wireless Service Keyboard with Touchpad	Article-No.: AM-EIS-401-15
HDMI-DVI-D Converter (passive)	Article-No.: AM-EIS-401-13
WLAN IEEE 802.11 b/g/n Module	Article-No.: on request

HI-Server 4.0

EisBaer HI-Server 4.0 NT (power supply)	Article-No.: AM-EIS-401-40
EisBaer HI-Server - Wireless Service Keyboard with Touchpad	Article-No.: AM-EIS-401-15

Warranty Extensions

EisBaer HI-Server 1.9 to 24-Months incl. advanced replacement in case of failure, per unit	Article-No.: AM-EIS-400-22
EisBaer HI-Server 3.0 to 24-Months incl. advanced replacement in case of failure, per unit	Article-No.: AM-EIS-400-28
EisBaer HI-Server 3.7 to 24-Months incl. advanced replacement in case of failure, per unit	Article-No.: AM-EIS-400-26
EisBaer HI-Server 4.0 to 24-Months incl. advanced replacement in case of failure, per unit	Article-No.: AM-EIS-400-27

HI-Server - Series



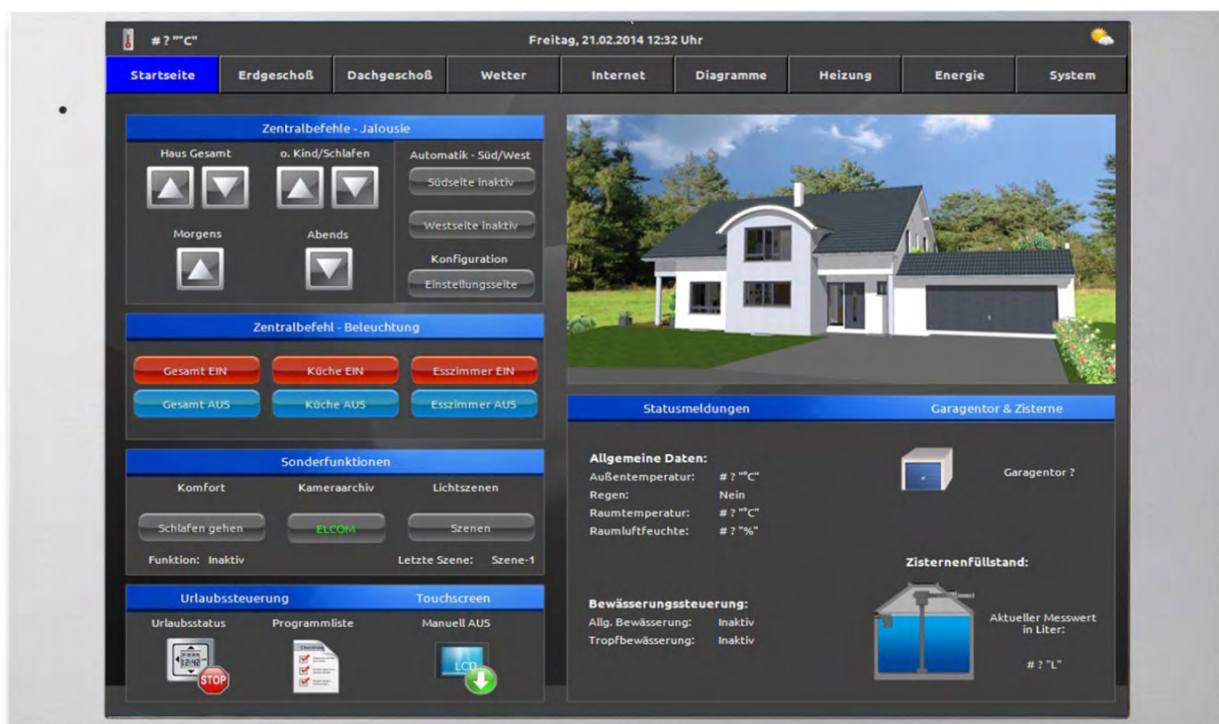


EIS TOUCH - SERIES

BUILT-IN TOUCH SCREEN PCs IN STANDARD AND WIDE-SCREEN FORMAT

ELEGANT AND STYLUS TOUCH PANELS FOR YOUR EISBAER SCADA
VISUALISATION IN PRIVATE AND COMMERCIAL CONSTRUCTION





EisTouch – Series 3G

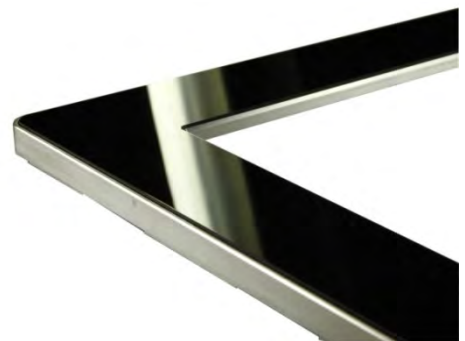
The ideal solution to control your visualisation project

A complete solution from a single source – TouchPanel, TouchPanel-PC and visualisation in one piece without additional external computer as server. With minimal energy consumption for the daily 24-hour operation; hardware- und software-optimized.



Quality and service, this is what EisBaer SCADA and our hardware stand for. The EisBaer EisTouch series is a complete solution that offers equally design and function with a very good price/performance ratio. On the available display sizes, even larger objects can be visualized and easily operated. Whether as a touch-display (3G series), as complete Touch-PC (3G series) or as Touch-PC in wide-screen-format (4G/5G series) – with the optional EisBaer SCADA visualisation interface it offers the right package for each application.

EisTouch – Series 3G



EisTouch – Series 3G

EisBaer EisTouch HI 3G – Series

Built-in-Touchscreen with HI-Server (high-integrated PC)
and EisBaer SCADA-visualisation

The EisBaer EisTouch 3G – series is characterized as a complete solution with a very good price performance ratio.

More Space!

May it be a little more with respect to the visualisation? On the two display sizes 15" and 19" even larger objects can be visualized easily in an aspect ratio of 4:3 or 5:4.

Design and Function!

By the use of the new flush the EisTouchs are easily mountable.

The new inlay-frames are available in anodized aluminum or in acrylic glass (different colours).



Diversity!

Whether as a pure touch-screen or as a complete TouchPC – the third generation of the EisTouch (3G) is for everybody the right package for everybody – including the graphical user interface.

Multimedia included!

What is new is the equipment with microphone, active stereo speakers, USB-port and Reset-Button – hidden under the frame – for an even better look. Thus, inter-communication and playback of audio and video is possible.



EisTouch 3G – Technical Data:

EisBaer - EisTouch HI 3G – 15"

- 1x 15 " Touch Screen, resistive, USB, DVI and VGA; frame: Inlay
- 1x EisBaer HI-Server 3.0
- 1x stainless steel flush for wall mounting
- 1x frame (anodized aluminium in black or silver OR acrylic glass in black or white)
- 1x front-USB, Active-Stereo-Speaker, microphone and display-function buttons
- Mounting depth: 80mm, Dimensions: 377 x 308 x 80 mm
- Cutting: 380 x 293 x 80 mm; Frame: 397,4 x 321,3 mm
- Resolution: 1024 x 768 Pixel, LED-Backlight

EisBaer - EisTouch HI 3G – 19"

- 1x 19" Touch Screen, resistive, USB; DVI and VGA; frame: Inlay
- 1x EisBaer HI-Server 3.0
- 1x stainless steel flush for wall mounting
- 1x frame (anodized aluminium in black or silver OR acrylic glass in black or white)
- 1x front-USB, Active-Stereo-Speaker, microphone and display-function buttons
- Mounting depth: 80mm, Dimensions: 471 x 396 x 80 mm
- Cutting: 474 x 381 x 80 mm; Frame: 481 x 406 mm
- Resolution: 1280 x 1024 Pixel

Our EisTouches with HI-Server are always fully equipped and assembled. The HI-Server is mounted directly behind the touch panel and does not need to be housed separately. The complete assemblies are subjected to a 24-hour BurnIn-test before delivery.

Equipment Variants

EisTouch 3G with HI-Server 3.0 (EisTouch HI 3G)

EisBaer - EisTouch HI 3G – 15"

15" EisTouch 3G, HI-Server 3.0 (Technical data, see next page), flush for wall-mounting, anodized aluminum frame in black (SW) or silver (SI), acrylic glass black (AS) or white (AW)*

Art.-No.: AM-EIS-317-61-xx

EisBaer - EisTouch HI 3G – 19"

19" EisTouch 3G, HI-Server 3.0 (Technical data, see next page), flush for wall-mounting, anodized aluminum frame in black (SW) or silver (SI), acrylic glass black (AS) or white (AW)*

Art.-No.: AM-EIS-317-31-xx

EisTouch – Series 3G

EisTouch 3G DVI/VGA without HI-Server (EisTouch 3G)

EisBaer - EisTouch 3G – 15"

15" EisTouch 3G, flush for wall-mounting, anodized aluminum frame in black (SW) or silver (SI), acrylic glass black (AS) or white (AW)*

Art.-No.: AM-EIS-305-60-xx

EisBaer – EisTouch 3G – 19"

19" EisTouch 3G, flush for wall-mounting, anodized aluminum frame in black (SW) or silver (SI), acrylic glass black (AS) or white (AW)*

Art.-No.: AM-EIS-305-30-xx

*other frames in different colours and/or materials on request



EisTouch 3G – Wall-mounting flush:

EisBaer - EisTouch 3G – 15" – flush
flush for wall mounting*

Art.-No.: AM-EIS-305-62

EisBaer - EisTouch 3G – 19" – flush
flush for wall mounting*

Art.-No.: AM-EIS-305-32

* Optional: Mounting kit for cavity wall mounting

Dimensions and installation of the wall-mounting flush:

15" EisTouch HI 3G:

A = 397,4mm (frame)

B = 321,3mm (frame)

C = 308mm (flush)

D = 377mm (flush)

E = 290mm (flush)

F = 80mm (flush)

19" EisTouch HI 3G:

A = 481mm (frame)

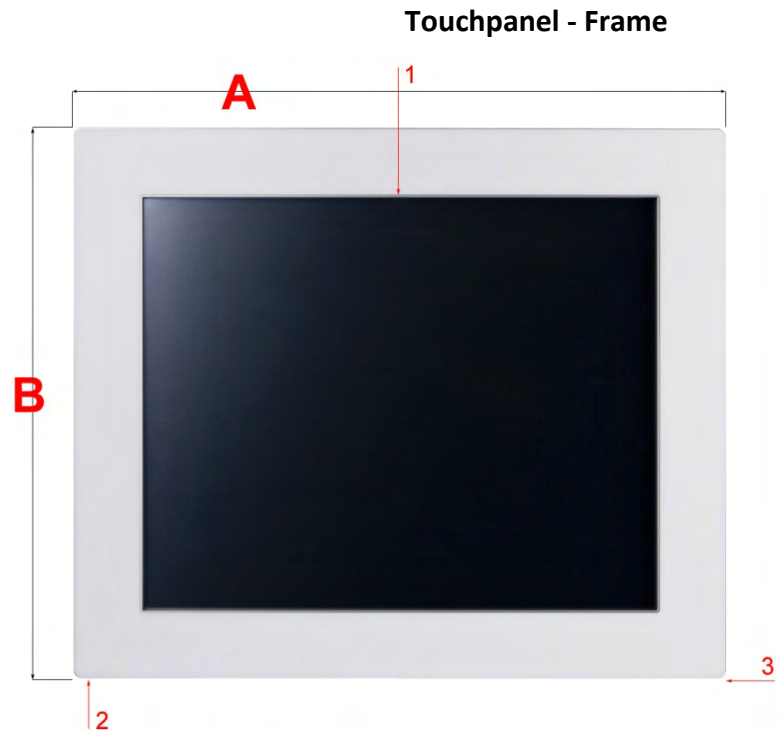
B = 406mm (frame)

C = 396mm (flush)

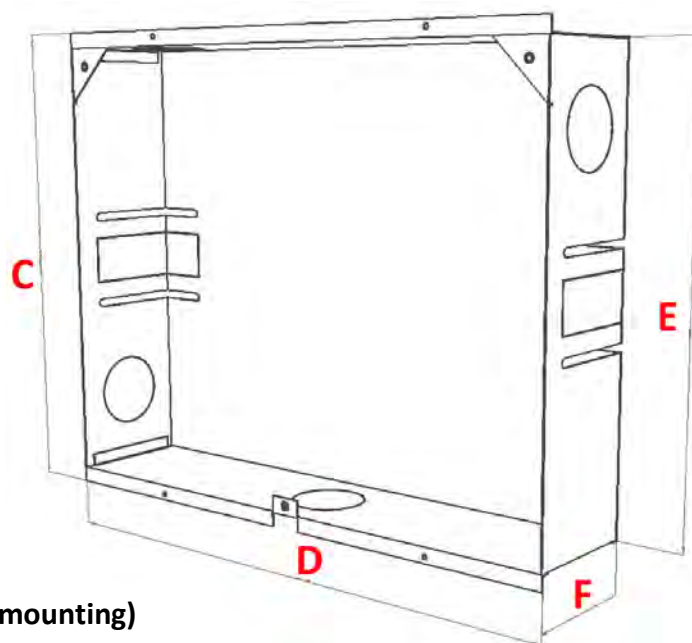
D = 471mm (flush)

E = 378mm (flush)

F = 80mm (flush)

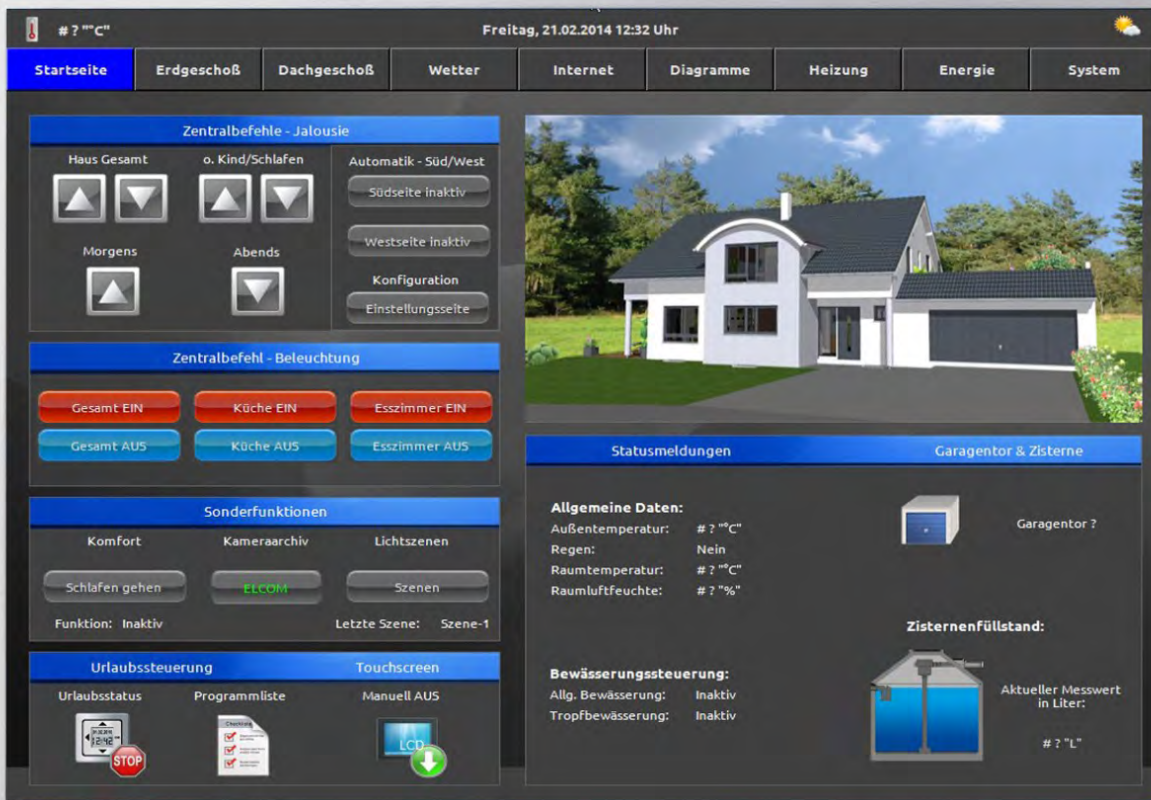


1= Microphone
2=Reset-Button
3=USB-Port



Wall Box (flush mounting)

EisTouch – Series 4G



The ideal solution to control your visualisation project

A complete solution from a single source – Touchpanel, Touchpanel-PC and visualisation in one piece without additional external computer as server. With minimal energy consumption for the daily 24-hour operation; hardware- und software-optimized.

EisTouch – Series 4G



EisTouch – Series 4G

EisBaer EisTouch HI 4G - Series

Built-in-Touchscreens in wide-screen formate

**The EisBaer EisTouch 4G – series: high-quality and elegant
Exclusive combination of aluminum and glass**

More Space!

May it be a little more in terms of visualisation? On the display sizes 10", 16", 22" and 24" even larger objects can be visualized easily in an aspect ratio of 16:9.

Design and Function!

By the use of the new flush the EisTouches are easily mountable.

The new design combination made of glass and aluminum is an optical highlight for your building visualisation.

Diversity!

The 4th EisTouch generation (4G) in wide-screen formate with LED-Backlight is for everybody the right package – including the visualisation surface EisBaer SCADA.

Multimedia included!

Newly equipped with microphone, active stereo speakers, USB and Reset button – hidden under the frame – for an even better look. Therefore, inter-communication and playback of audio and video is possible.



EisTouch 4G – Technical Data:

EisBaer - EisTouch HI 4G – 10"

- 1x 10,2" Touch Screen TFT with capacitive Touch, USB with EisBaer HI-Server onBoard
- 1x stainless steel flush without power supply (optional)
- Frame: Aluminum anodized – Silver or Black, solid glass-touch with black background
- 1x Front-USB, active Stereo speakers and microphone
- Resolution: 1024 x 600 Pixel, LED-Backlight

EisBaer - EisTouch HI 4G – 16":

- 1x 16" Touch Screen, capacitive, USB; DVI and DP
- 1x incl. EisBaer HI-Server 3.0
- 1x stainless steel flush
- Frame: Aluminum anodized – Silver or Black, solid glass-touch with black background
- 1x Front-USB, active Stereo speakers and microphone
- Integrated power supply in the flush
- Resolution: 1366 x 768 Pixel, LED-Backlight

EisBaer - EisTouch HI 4G – 22"

- 1x 22" Touch Screen, capacitive, USB; DVI and DP
- 1x incl. EisBaer HI-Server 3.0
- 1x stainless steel flush
- Frame: Aluminum anodized – Silver or Black, solid glass-touch with black background
- 1x Front-USB, active Stereo speakers and microphone
- Integrated power supply in the flush
- Resolution: 1920 x 1080 Pixel (Full HD), LED-Backlight

EisBaer - EisTouch HI 4G – 24":

- 1x 24" Touch Screen, capacitive, USB; DVI and DP
- 1x incl. EisBaer HI-Server 3.0
- 1x stainless steel flush
- Frame: Aluminum anodized – Silver or Black, solid glass-touch with black background
- 1x Front-USB, active Stereo speakers and microphone
- Integrated power supply in the flush
- Resolution: 1920 x 1200 Pixel (Full HD), LED-Backlight

Our EisTouches with HI-Server are always fully equipped and assembled. The HI-Server is mounted **directly behind the touch panel** and does not need to be housed separately. The complete assemblies are subjected to a 24-hour BurnIn-test before delivery.

EisTouch – Series 4G

EisTouch 4G – Wall-mounting flush:

EisBaer - EisTouch 4G – 10" – wall-mounting flush
flush for wall-mounting*

Art.-No.: AM-EIS-304-82

EisBaer - EisTouch 4G – 16" – wall-mounting flush
flush for wall-mounting *

Art.-No.: AM-EIS-304-92

EisBaer - EisTouch 4G – 22" – wall-mounting flush
flush for wall-mounting*

Art.-No.: AM-EIS-304-82

EisBaer - EisTouch 4G – 24" – wall-mounting flush
flush for wall-mounting *

Art.-No.: AM-EIS-304-92

*** Optional: Mounting kit for cavity wall mounting**



Dimensions and installation of the wall-mounting flush:

10" EisTouch HI 4G:

A = 310mm (frame)

B = 186mm (frame)

C = 276mm (flush)

E = 174mm (flush)

F = 70mm (flush)

16" EisTouch HI 4G:

A = 462mm (frame)

B = 272mm (frame)

C = 452mm (flush)

D = 258mm (flush)

E = 250mm (flush)

F = 80mm (flush)

22" EisTouch HI 4G:

A = 595mm (frame)

B = 340mm (frame)

C = 587mm (flush)

D = 332mm (flush)

E = 327mm (flush)

F = 80mm (flush)

24" EisTouch HI 4G:

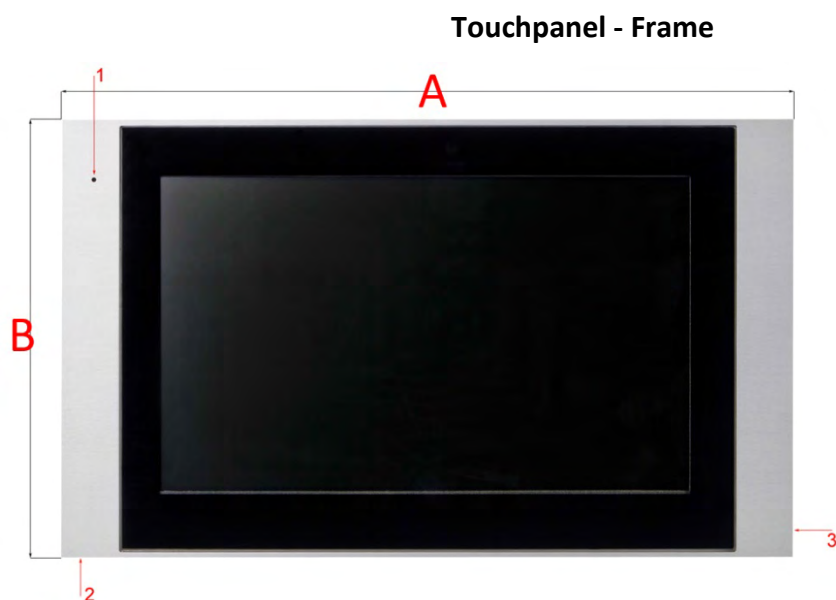
A = 640mm (frame)

B = 387mm (frame)

C = 623mm (flush)

D = 387mm (flush)

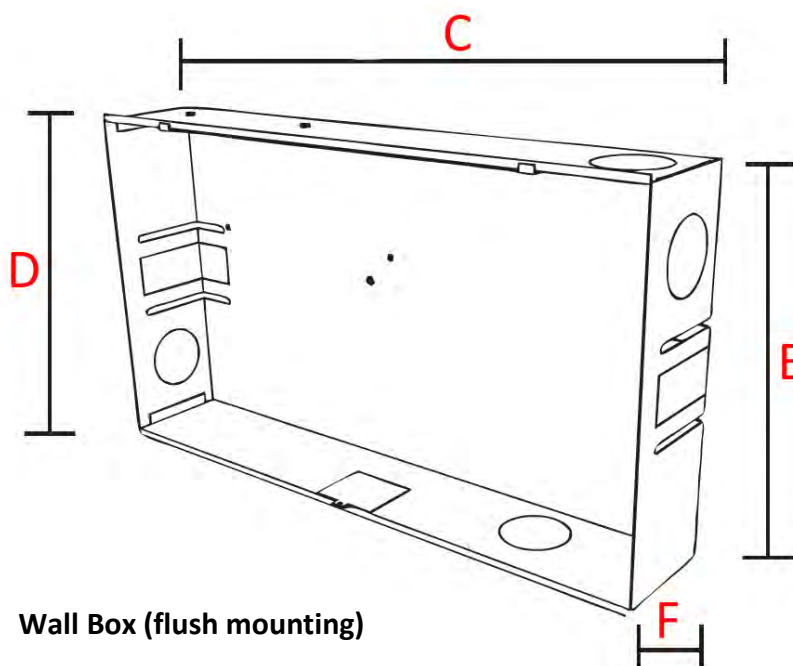
F = 80mm (flush)



1= Microphone

2=USB-Port

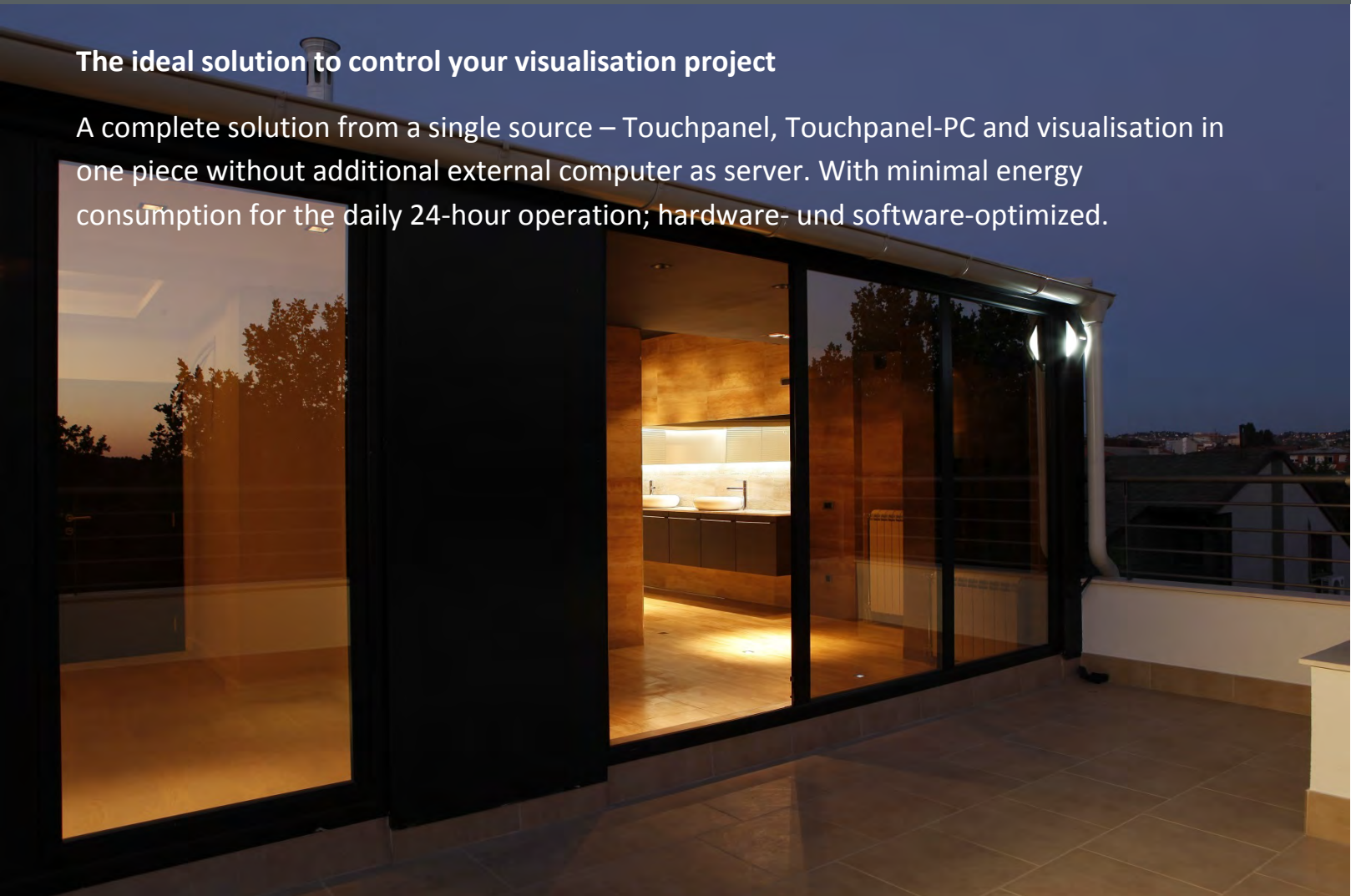
3=Reset-Button



EisTouch – Series 5G

The ideal solution to control your visualisation project

A complete solution from a single source – Touchpanel, Touchpanel-PC and visualisation in one piece without additional external computer as server. With minimal energy consumption for the daily 24-hour operation; hardware- und software-optimized.



EisTouch – Series 5G



EisTouch – Series 5G

EisBaer EisTouch HI 5G - Series

Glass built-in-Touchscreens in wide-screen format for individualists

The EisBaer EisTouch 5G-Series: Beauty in perfection

Holistic glass surface - without frames and edges in black or white

Flexibility!

Our EisBaer EisTouch 5G devices are not only for flush-mounting, but with the optional wall-housing and mounting kit, for mounting on walls and columns.

Design and Function!

With the flush and surface mounting box, the EisTouches can be assembled easily. The full glass surface sets a visual and striking highlight for your building visualisation.

Complete Solution!

The 5th EisTouch generation (5G) in wide-screen format 16:9 with LED backlight is the right device for sophisticated customers – including the visualisation surface EisBaer SCADA.

Multimedia included!

A new feature is the equipment with microphone and active stereo speakers – hidden under the frame – for an even better look. Therefore, inter-communication and playback of audio and video is possible.



EisTouch 5G – Technical Data:

EisBaer - EisTouch HI 5G – 12"

- 1x 10" Touchscreen TFT with projective capacitive Touch
- 1x incl. integrated EisBaer HI-Server (2x 1.45 GHz)
- 1x stainless steel flush, lacquered – without power supply
- Glass-Touch with black or white background
- Active stereo speakers and microphone
- External power supply, has to be ordered separately
- Resolution: 1280 x 800 Pixel (WSVGA), LED-Backlight

EisBaer - EisTouch HI 5G – 12"

- 1x 12" Touchscreen TFT with projective capacitive Touch
- 1x incl. integrated EisBaer HI-Server (2x 1.58 GHz)
- 1x stainless steel flush, lacquered – without power supply
- Glass-Touch with black or white background
- Active stereo speakers and microphone
- External power supply, has to be ordered separately
- Resolution: 1280 x 800 Pixel (WSVGA), LED-Backlight

EisBaer - EisTouch HI 5G – 16"

- 1x 16" Touchscreen TFT with projective capacitive Touch, USB, DVI
- 1x incl. EisBaer HI-Server 3.0
- 1x stainless steel flush, lacquered
- Glass-Touch with black or white background
- Active stereo speakers and microphone
- Integrated power supply in the flush
- Resolution: 1366 x 768 Pixel, LED-Backlight

Our EisTouches with HI-Server are always fully equipped and assembled. The HI-Server is mounted **directly behind the touch panel** and does not need to be housed separately. The complete assemblies are subjected to a 24-hour Burn-In-test before delivery.

EisTouch – Series 5G

Equipment Variants EisTouch HI 5G

EisTouch 5G – Flush (wall-mounting or on-wall):

EisBaer - EisTouch 5G – 10" – flush
wall-mounting*

Art.-No.: AM-EIS-304-162

EisBaer - EisTouch 5G – 12" – flush
wall-mounting*

Art.-No.: AM-EIS-304-162

EisBaer - EisTouch 5G – 16" – flush
wall-mounting*

Art.-No.: AM-EIS-304-162

EisBaer - EisTouch 5G – 16" – flush
on-wall flush

Art.-No.: AM-EIS-304-162

* Optional: Cavity-wall mounting set

EisTouch 5G – Additional Articles:

12" EisBaer - EisTouch 5G – On-wall mounting set

Art.-No.: AM-EIS-304-153

10" EisBaer - EisTouch 5G – Power supply
is required for operation

Art.-No.: AM-EIS-401-40

12" EisBaer - EisTouch 5G – Power supply
is required for operation

Art.-No.: AM-EIS-401-40



EisTouch – Series 5G

Dimensions and installation of the wall-mounting flush:

10" EisTouch HI 5G:

A = 302mm (front)

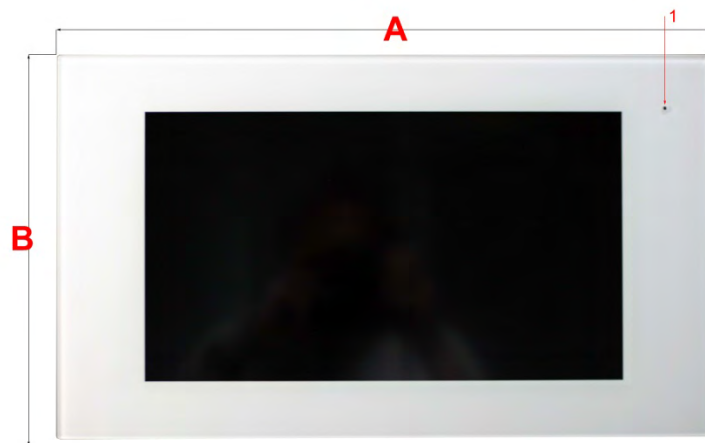
B = 208mm (front)

C = 278 mm (flush)

E = 176 mm (flush)

F = 75 mm (flush)

Touchpanel - Frame



12" EisTouch HI 5G:

A = 350mm (front)

B = 228mm (front)

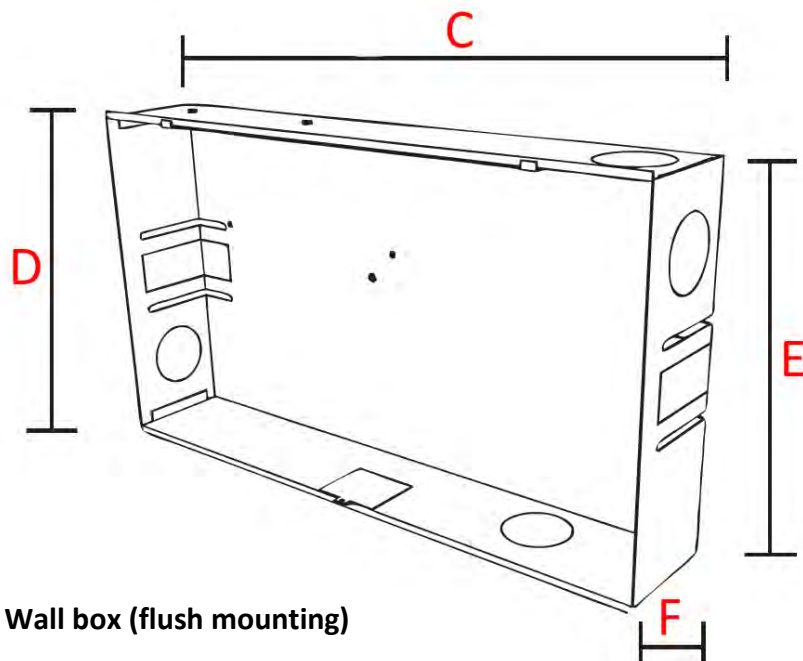
C = 328 mm (flush)

D = 210 mm (flush)

E = 210 mm (flush)

F = 80 mm (flush)

1= Microphone



16" EisTouch HI 5G:

A = 472mm (front)

B = 277mm (front)

C = 452mm (flush)

D = 258mm (flush)

E = 250mm (flush)

F = 80mm (flush)

Wall box (flush mounting)

EisTouch – Serie 6G



EisBaer EisTouch HI 6G

Customisable 10 inch touchpanel incl. PC in wide-screen format

EisBaer EisTouch 6G:

The general-purpose touch panel for new installations and / or replacement of worn-out panels.

Flexibility!

Our EisBaer EisTouch 6G is not only suitable for an exclusive UP installation, but with the optional surface-mounted frame, also as an ideal replacement for some panels from third-party manufacturers.

Design and Function!

With the almost complete glass surface, the EisTouch 6G also sets a visual and striking highlight for your building visualisation.



10" EisTouch 6G – Technical Data:

- 10 "touch screen TFT with projective capacitive touch, fanless
- integrated EisBaer HI server with Celeron Quadcore 1.83GHz
- Intel HD Graphic
- 2GB RAM, 60GB SSD (mSATA II)
- 1x USB 2.0, 1x USB 3.0, 1x GBit-LAN, 1x PoE, 1x serial
- Incl. flush-mounted steel housing incl. cavity wall mounting bracket
- Windows 7 Embedded or Windows 7 Professional
- Power supply: PoE IEEE 202.3at from 25Watt
- Glass touch with black background
- Loudspeaker, but no microphone available
- optional: external 12V power supply REG
- Resolution: 1280 x 800 pixels, LED backlight



Optional EisBaer SCADA Hardware licences:

BASIC (10 pages / 200 components and channels)

EXTENDED (20 pages / 400 components and channels) are available.

EisTouch – Serie 6G

EisTouch 6G – Replacement options:

A special surface-mounted stainless steel frame gives you the ability to quickly, easily and cleanly replace various third-party touchpanels, while retaining the previous flush-mount case. The AP frame is bolted directly to the previous flush-mounted housing, forming a new unit. The existing housing also serves as additional storage space for cables and KNX interface if required.

Easy replacement!

With the special AP frame in conjunction with the EisTouch HI 6G, you can replace the following third-party touchpanel variants:

- **MT 701 / CT 701**
- **Control Panel**
- **Comfort Panel**
- **Smart Panel**



Dimensions and installation of the wall-mounting flush:

10" EisTouch HI 6G:

A = 263mm (Front)

B = 171mm (Front)

T = 13mm (Front)

C = 256 mm (Wall mounting flush)

D = 162 mm (Wall mounting flush)

E = 148 mm (Wall mounting flush)

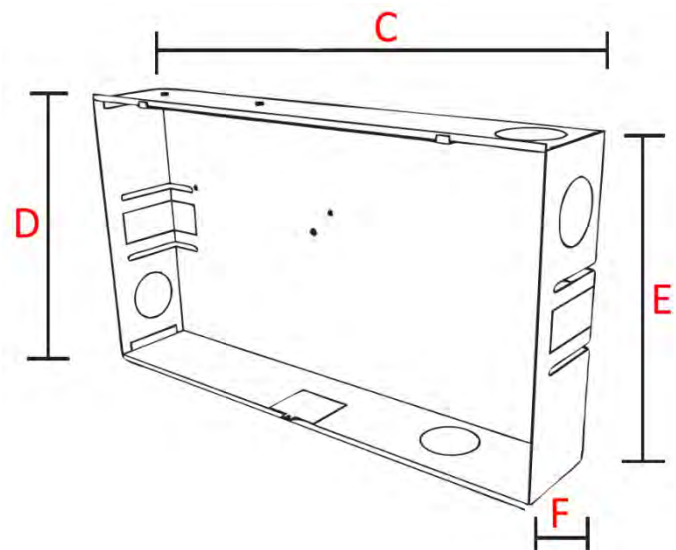
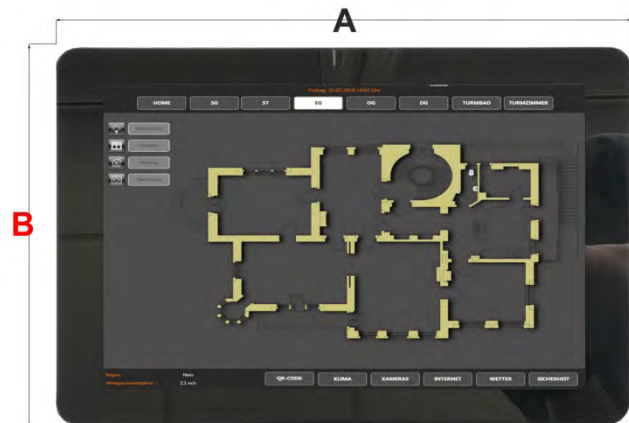
F = 65 mm (Wall mounting flush)

G = 267 mm (On wall flush)

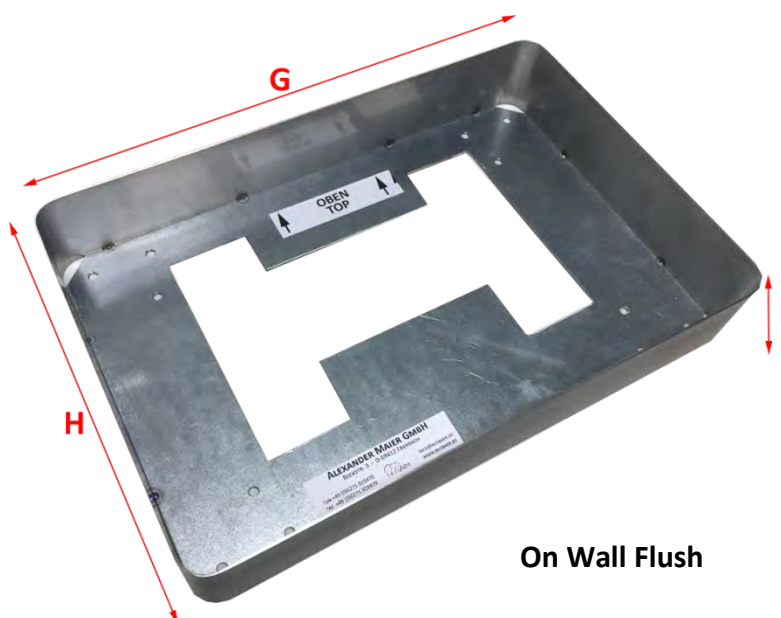
H = 176 mm (On wall flush)

I = 65 mm (On wall flush)

Touchpanel – Front view



Flush (Wall mounting)



On Wall Flush



ALEXANDER MAIER GMBH
GEBÄUDESISTEMTECHNIK

Beckstraße 3
 69412 Eberbach
 Germany



Phone +49 (0) 6271 919470

Fax +49 (0) 6271 919479

E-Mail: info@busbaer.de

www.busbaer.de

FOR MORE INFORMATION AND YOUR REGIONAL CONTACT:

WWW.BUSBAER.DE



Note:

We reserve the right for technical changes or modifying the contents of this document at any time without prior notice. For orders, the agreed particulars shall prevail. The Alexander Maier GmbH assumes no responsibility for any errors or omissions in this document. Any reproduction, disclosure to third parties or utilization of its contents, even in part, is not permitted without prior written consent of Alexander Maier GmbH.